



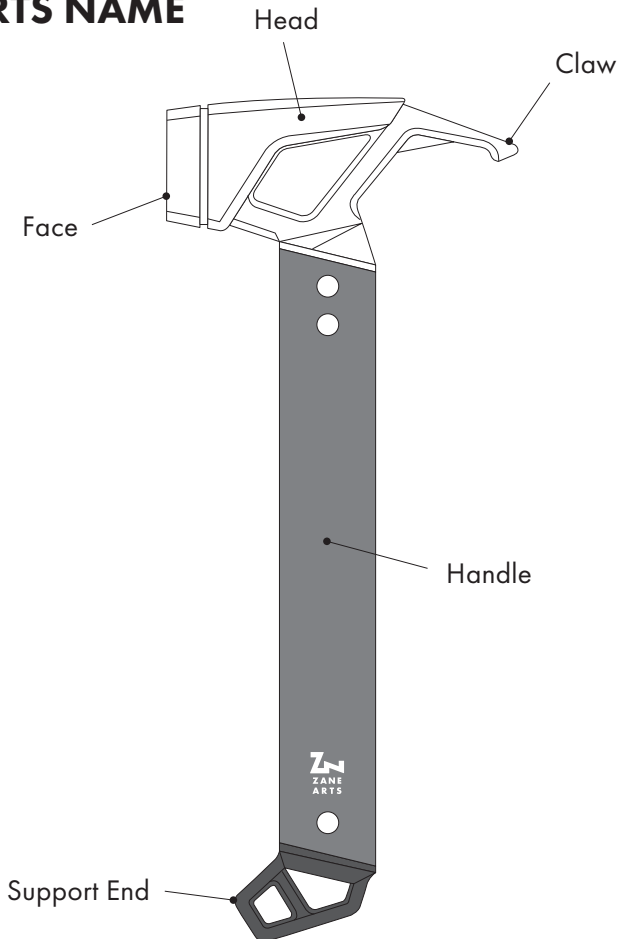
TO-401 / GRART HAMMER

MANUAL - Ver 1.01

EN

Please be sure to read the manual before using this product. If you have any questions or if there is a problem with the product, please contact the store where you purchased the product or us directly.

■ PARTS NAME



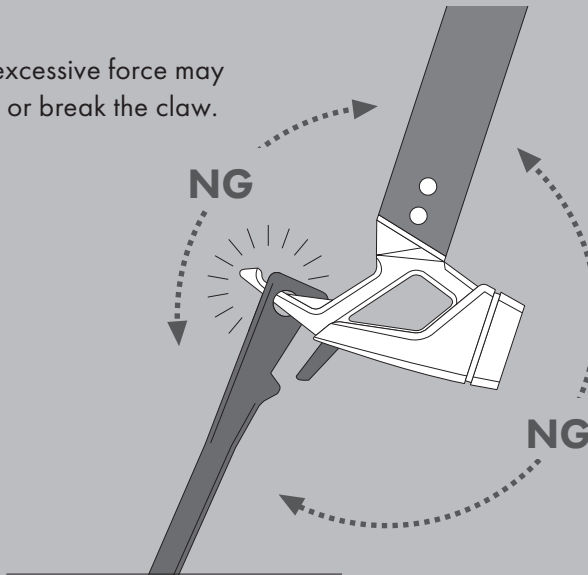
■ ABOUT THIS PRODUCT

Please take some time to understand the characteristics of this product before using it.

Please do not use excessive force on the claw.

When removing pegs, insert the claw into the peg and pull vertically. Twisting or leveraging the claw may deform or break the claw.

Using excessive force may deform or break the claw.



■ Handling Precautions

Be sure to read and understand the following contents before use to prevent harm to the user and others, and damage to property.



DANGER

**INDICATES CONTENT THAT MAY RESULT
IN DEATH OR SERIOUS INJURY.**

- To avoid injury, be sure that your surroundings are clear of people before using this product.
- Please be careful not to hit your hands, fingers, or feet when using.
- Because this product becomes slippery when wet, as with sweaty hands or in rain, please be extra careful not to let it fly out of your hands.
- Please drive pegs only with the hammer face. Misuse will cause damage.
- Should any parts become loose, please refrain from use.
- Please do not let children use this product.

- Please refrain from forcibly driving pegs. Forcibly driving pegs into hard or frozen ground may strain the metal causing the head to crack or the handle to bend.
- The claw is sharp. Please be careful not to hit your face or body with the claw.



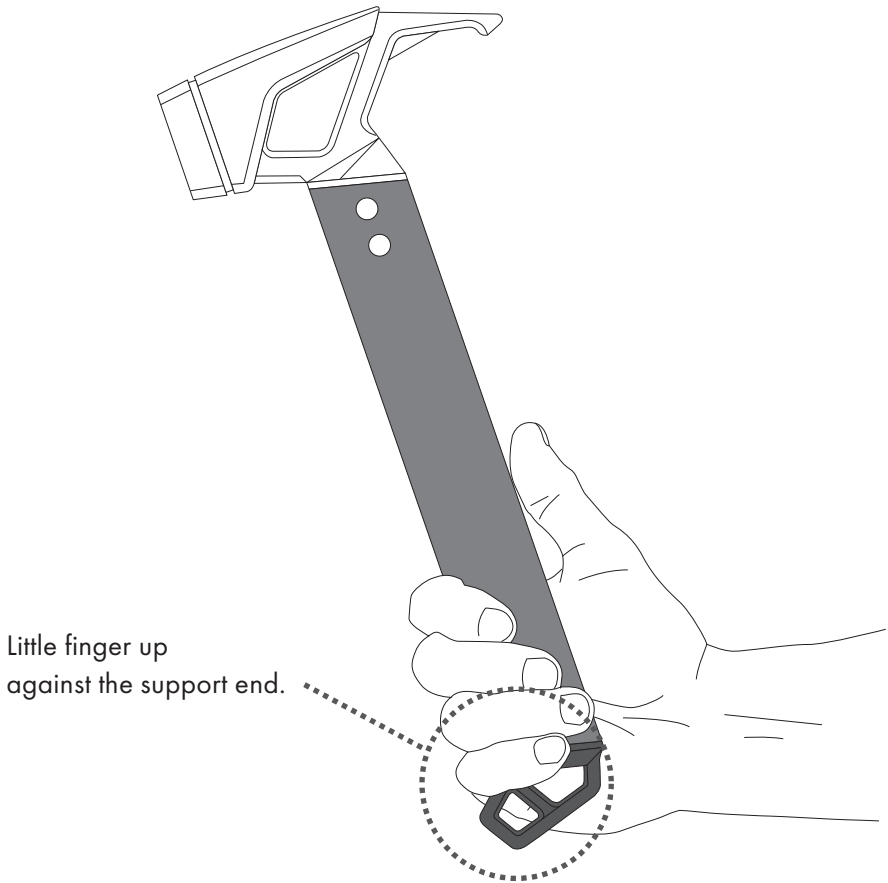
**INDICATES CONTENT THAT MAY CAUSE
INJURIES OR PROPERTY DAMAGE.**

WARNING

- When removing pegs, insert the claw into the peg and pull vertically. Twisting or leveraging the claw may deform or break the claw.
- The head will gradually scratch and dent with use. Burrs may form around the edges and fall off. Periodically check the head for burrs. File burrs down with a metal file. Please be careful not to hurt yourself on burrs.
- After each use, wipe off any moisture and dry thoroughly before storing. If stored wet or uncleaned the product may corrode.
- Please keep out of reach of infants and children.
- Do not modify this product, it may impair its performance.

■ USE

In order to drive pegs more easily, make the most of centrifugal force by placing your little finger up against the support end while swinging.



■ WARRANTY AND REPAIR

If you find any defects in the product, please contact the store where you purchased it or us directly. We will replace or repair any item found to have a manufacturing defect free of charge. We will repair products with damage caused by wear and aging at a reasonable price. Please note that it may be difficult to obtain some materials due to the discontinuation of products and parts, and repairs may not be possible based on the condition of the product.

※ When sending a product for repair, please remove dirt and moisture from the product before sending it. Moisture and dirt may interfere with repairs. Items that are not clean and dry upon arrival for repair will incur additional charges at their own expense for cleaning. Thank you for your understanding.

ZANE ARTS, Inc.

7190-2 Shimauchi, Matsumoto, Nagano 390-0851

Phone: 0263-87-2955 FAX: 0263-87-2966

info@zanearts.com